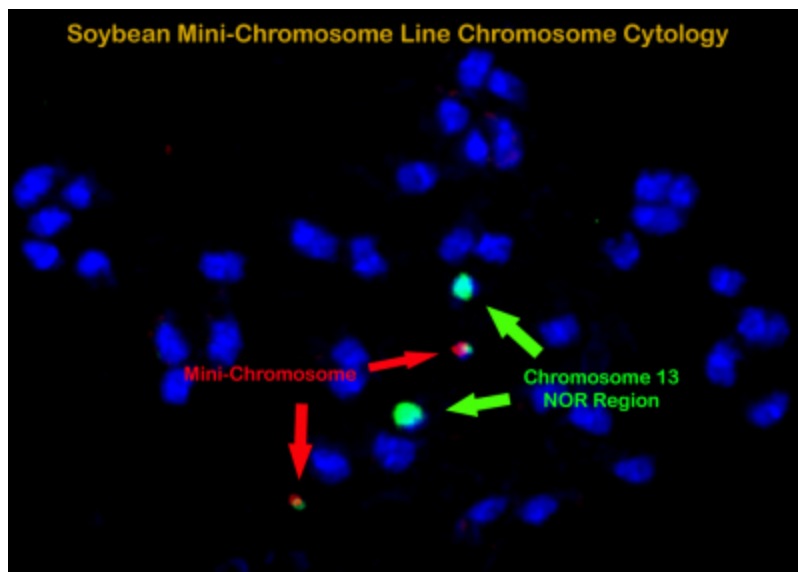


## Agrisoma Updates on Field Performance of Soybean Engineered with Mini-chromosomes

July 15, 2009 - Agrisoma Biosciences Inc. ("Agrisoma") announced today that it will be providing updates on the field programs evaluating the ETL engineered plants.

The company is conducting field trials of its ETL soybean engineered with a mini-chromosome produced with Agrisoma's technology. These field trials, which are being conducted under the regulations set forth by the Canadian Food Inspection Agency, provide replicated performance and evaluation of the impacts of the new mini-chromosome on crop agronomic properties. The focus of these trials are to demonstrate that the addition of a mini-chromosome does not detract from typical crop performance, and as such provides an excellent mechanism for multiple trait stacking.

Agrisoma has produced a new soybean line that carries an independent "mini-chromosome" comprising multiple new regions for efficient gene stacking in soybean. This new variety has been bred to homozygosity and now contains a mini-chromosome pair. The cytology of this line is shown below:



This mini-chromosome line was selfed and seed collected through T3 generation. Seed set was normal and seed germination was normal. A randomized 4 X 4 block site was designed and seed planted using typical conditions for soil preparation and seed drill. Normal agronomic practices were employed.

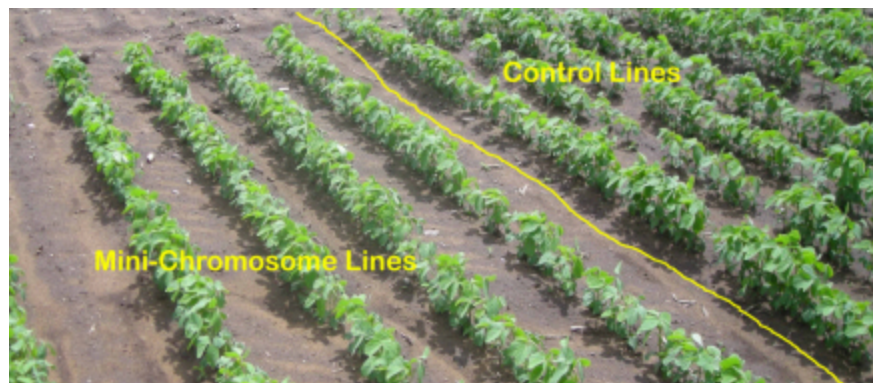
In this design, a number of control varieties were used in addition to transgenic lines.

The emergence of the transgenic was as good if not better than the control line. This is shown below:

---



Growth rates are normal and overall performance has been better or equal to controls. The weather conditions have been cooler and wetter than normal, but this has not made any discernable impact on the performance of the mini-chromosome line. The growth rate of the lines are as expected:





The soybean mini-chromosome lines, which carry a new independent mini-chromosome that has multiple regions for stacking of new traits, has shown excellent field performance to date. As these trials progress, more updates will be provided. Please visit [www.agrisoma.com](http://www.agrisoma.com) under "News" for more updates.

For further information: Agrisoma contact: Steven Fabijanski, Ph.D., President and CEO, Agrisoma Biosciences Inc., Tel: (613) 834-5265, Email: [sfabijanski@agrisoma.com](mailto:sfabijanski@agrisoma.com)

### **About Agrisoma**

Agrisoma Biosciences Inc. is a private agricultural biotechnology company using its leading edge ETL technology to create new crop varieties engineered for high-value applications such as biofuel production. Agrisoma's ETL, technology allows the assembly of engineered, multi traits within highly productive genetic loci to efficiently express new genes. ETL technology is patent-protected and includes proprietary technology that allows for increased productivity and product yield via a proprietary gene stacking process. For information about Agrisoma, and its technology, collaborations and partnerships, please visit: [www.agrisoma.com](http://www.agrisoma.com)

Note: Certain of the statements contained in this press release are forward-looking statements which involve known and unknown risks, uncertainties and other factors which may cause the actual results, performance or achievements of the Company, or industry results, to be materially different from any future results, performance or achievements expressed or implied by such forward-looking statements.

